

GENIE S-125

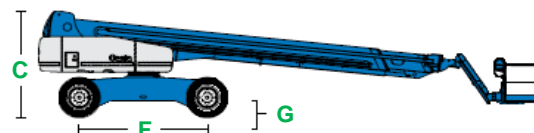
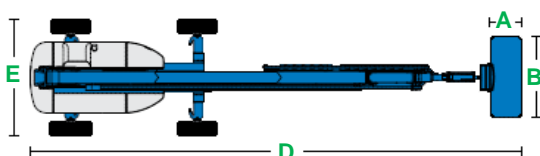


| MEASUREMENTS | | METRIC | IMPERIAL |
|--------------------------|---------------------------------------|-----------------|-------------|
| Working height maximum* | | 40.15 m | 131 ft 9 in |
| Platform height maximum | | 38.15 m | 125 ft 2 in |
| Horizontal reach maximum | | 24.40 m | 80 ft |
| Below ground reach | | 3.27 m | 10 ft 9 in |
| A x B | Platform dimensions (length x width) | 0.91 m x 2.44 m | 3 ft x 8 ft |
| C | Height - stowed | 3.07 m | 10 ft 1 in |
| D | Length - stowed | 14.25 m | 46 ft 9 in |
| | Length - transport (jib tucked under) | 12.17 m | 40 ft |
| E | Width - axles retracted | 2.49 m | 8 ft 2 in |
| | Width - axles extended | 3.35 m | 11 ft |
| F | Wheelbase | 3.66 m | 12 ft |
| G | Ground clearance - centre | 40 cm | 1 ft 4 in |

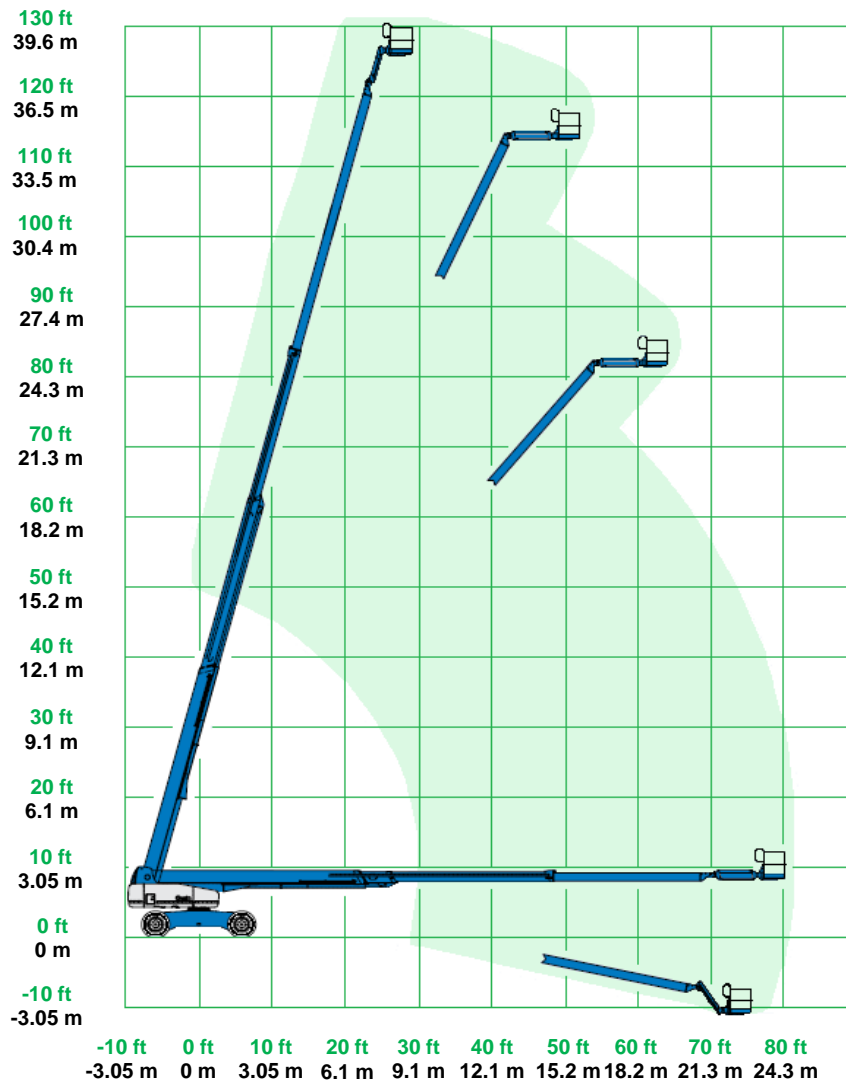
| PRODUCTIVITY | | |
|---|------------------------------------|----------------------|
| Platform capacity | 227 kg | 500 lb |
| Maximum number of persons | 2 | 2 |
| Maximum wind speed (12.5 m/s) | 45 km/h | 28 mph |
| Platform rotation | 160° | 160° |
| Vertical jib rotation | 135° | 135° |
| Turntable rotation | 360° continuous | 360° continuous |
| Turntable tailswing - axle retracted | 1.68 m | 5 ft 6 in |
| Turntable tailswing - axle extended | 1.24 m | 4 ft 1 in |
| Drive speed - stowed | 4.40 km/h | 2.73 mph |
| Drive speed - raised / extended - below 80 feet | 1.10 km/h | 0.68 mph |
| Drive speed - raised / extended - above 80 feet | 0.55 km/h | 0.34 mph |
| Gradeability** | 40% | 21.80° |
| Inside turning radius with axle retracted | 4.01 m | 13 ft 2 in |
| Outside turning radius with axle retracted | 6.75 m | 22 ft 2 in |
| Inside turning radius with axle extended | 2.59 m | 8 ft 6 in |
| Outside turning radius with axle extended | 5.74 m | 18 ft 10 in |
| Controls | 12 V DC proportional | 12 V DC proportional |
| Tyres - RT lug foam-filled NHS | IN445/65D22.5 | IN445/65D22.5 |
| Wheel load maximum*** | 8,519 kg | 18,781 lb |
| Tyre contact pressure*** | 7.4 kg/cm ² (725 kPa) | 105 psi |
| Occupied floor pressure*** | 1,294 kg/m ² (12.7 kPa) | 265 psf |

| POWER | | |
|---------------------------|---|------------|
| Power source | Deutz 4 cylinder turbo diesel 58 kW (78 hp) | |
| Auxiliary power unit | 12 V DC | 12 V DC |
| Hydraulic tank capacity | 208 L | 54 gal lqd |
| Diesel fuel tank capacity | 151 L | 39 gal lqd |

| WEIGHT**** | | |
|------------|-----------|-----------|
| | 20,930 kg | 46,142 lb |



GENIE S-125 RANGE OF MOTION



*The metric equivalent of working height adds 2 m to platform height. Imperial adds 6 ft to platform height.

**Gradeability applies to driving on slopes. See operator's manual for details regarding slope rating.

***Floor loading information is approximate. It should be used only with adequate safety factors.

****Weight will vary depending on options.