

## GENIE Z-80/60

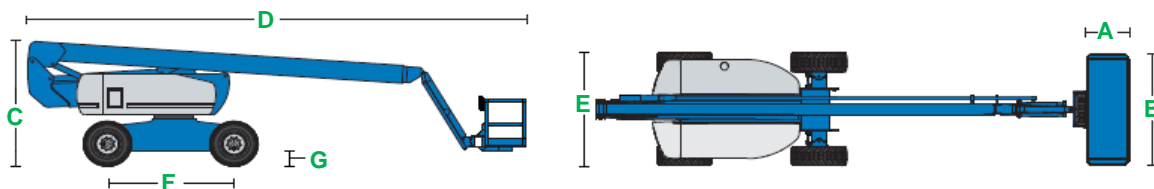


MEASUREMENTS		METRIC	IMPERIAL
Working height maximum*		25.77 m	84 ft 7 in
Platform height maximum		23.77 m	77 ft 12 in
Horizontal reach maximum		18.29 m	60 ft
Up and over clearance maximum		8.83 m	28 ft 12 in
Below ground reach		4.83 m	15 ft 10 in
<b>A x B</b>	Platform dimensions (length x width)	0.91 m x 2.44 m	3 ft x 8 ft
<b>C</b>	Height - stowed	3 m	9 ft 10 in
<b>D</b>	Length - stowed	11.27 m	36 ft 12 in
<b>E</b>	Width	2.49 m	8 ft 2 in
<b>F</b>	Wheelbase	2.85 m	9 ft 4 in
<b>G</b>	Ground clearance - centre	30 cm	12 in

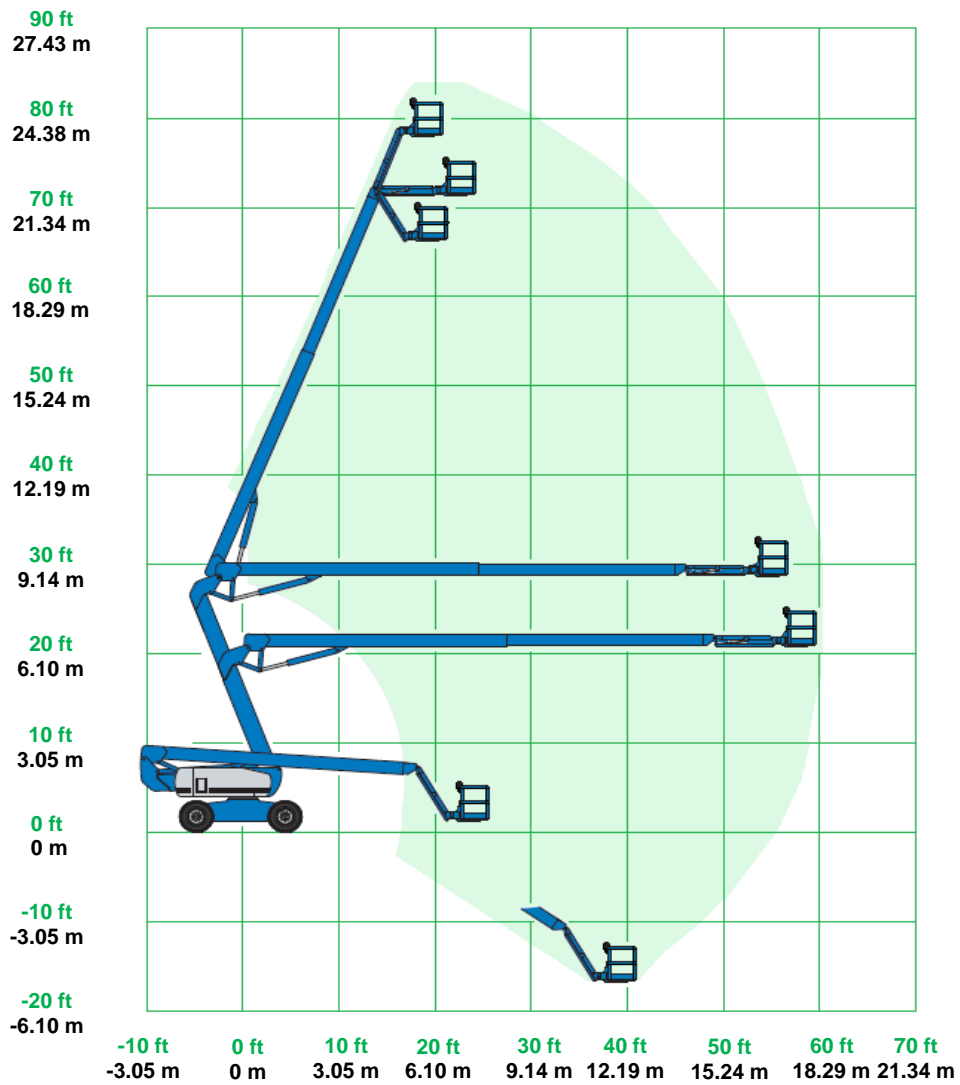
PRODUCTIVITY		
Platform capacity	227 kg	500 lb
Maximum number of persons	2	2
Maximum wind speed (12.5 m/s)	45 km/h	28 mph
Platform rotation	160°	160°
Vertical jib rotation	135°	135°
Turntable rotation	360° continuous	360° continuous
Turntable tailswing - riser up	1.17 m	3 ft 10 in
Turntable tailswing - riser down	2.24 m	7 ft 4 in
Drive speed - stowed	4.83 km/h	3 mph
Drive speed - booms raised**	1.1 km/h	0.68 mph
Gradeability - stowed***	45%	24.23°
Inside turning radius	2.13 m	6 ft 12 in
Outside turning radius	4.57 m	14 ft 12 in
Raise speed	76 sec	76 sec
Controls	12V DC proportional	12 V DC proportional
Tyres - RT lug foam-filled NHS	18-625	18-625
Wheel load maximum****	10,206 kg	22,500 lb
Tyre contact pressure****	9.1 kg/cm <sup>2</sup> (896 kPa)	129 psi
Occupied pressure****	1841 kg/m <sup>2</sup> (18.05 kPa)	2.61 psi

POWER		
Power source	Deutz TD L04i 4 cylinder diesel 58 kW (78 hp)	
Auxiliary power unit	12 V DC	12 V DC
Hydraulic tank capacity	170 L	45 gal lqd
Diesel fuel tank capacity	132 L	35 gal lqd

WEIGHT*****		
	17,235 kg	37,996 lb



## GENIE Z80/60 ..... RANGE OF MOTION



\*The metric equivalent of working height adds 2 m to platform height. Imperial adds 6 ft to platform height.

\*\*In lift mode (platform raised) the machine is designed to operate on firm, level surfaces only.

\*\*\*Gradeability applies to driving on slopes. See operator's manual for details regarding slope rating.

\*\*\*\*Floor loading information is approximate. It should be used only with adequate safety factors.

\*\*\*\*\*Weight will vary depending on options.