

# GENIE S-45

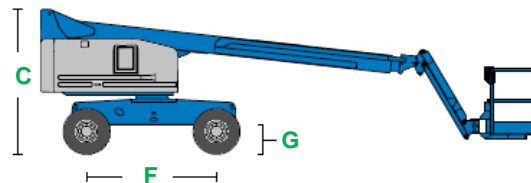
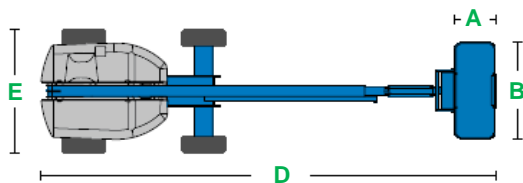


MEASUREMENTS		METRIC	IMPERIAL
Working height maximum*		15.50 m	50 ft 10 in
Platform height maximum		13.72 m	45 ft
Horizontal reach maximum		11.20 m	36 ft 9 in
Below ground reach		1.50 m	4 ft 11 in
<b>A x B</b>	Platform dimensions (length x width)	0.91 m x 2.44 m	3 ft x 8 ft
<b>C</b>	Height - stowed	2.49 m	8 ft 2 in
<b>D</b>	Length - stowed	8.50 m	27 ft 11 in
	Length - transport (jib tucked under)	6.80 m	22 ft 4 in
<b>E</b>	Width	2.30 m	7 ft 7 in
<b>F</b>	Wheelbase	2.20 m	7 ft 3 in
<b>G</b>	Ground clearance - centre	32 cm	1 ft 1 in

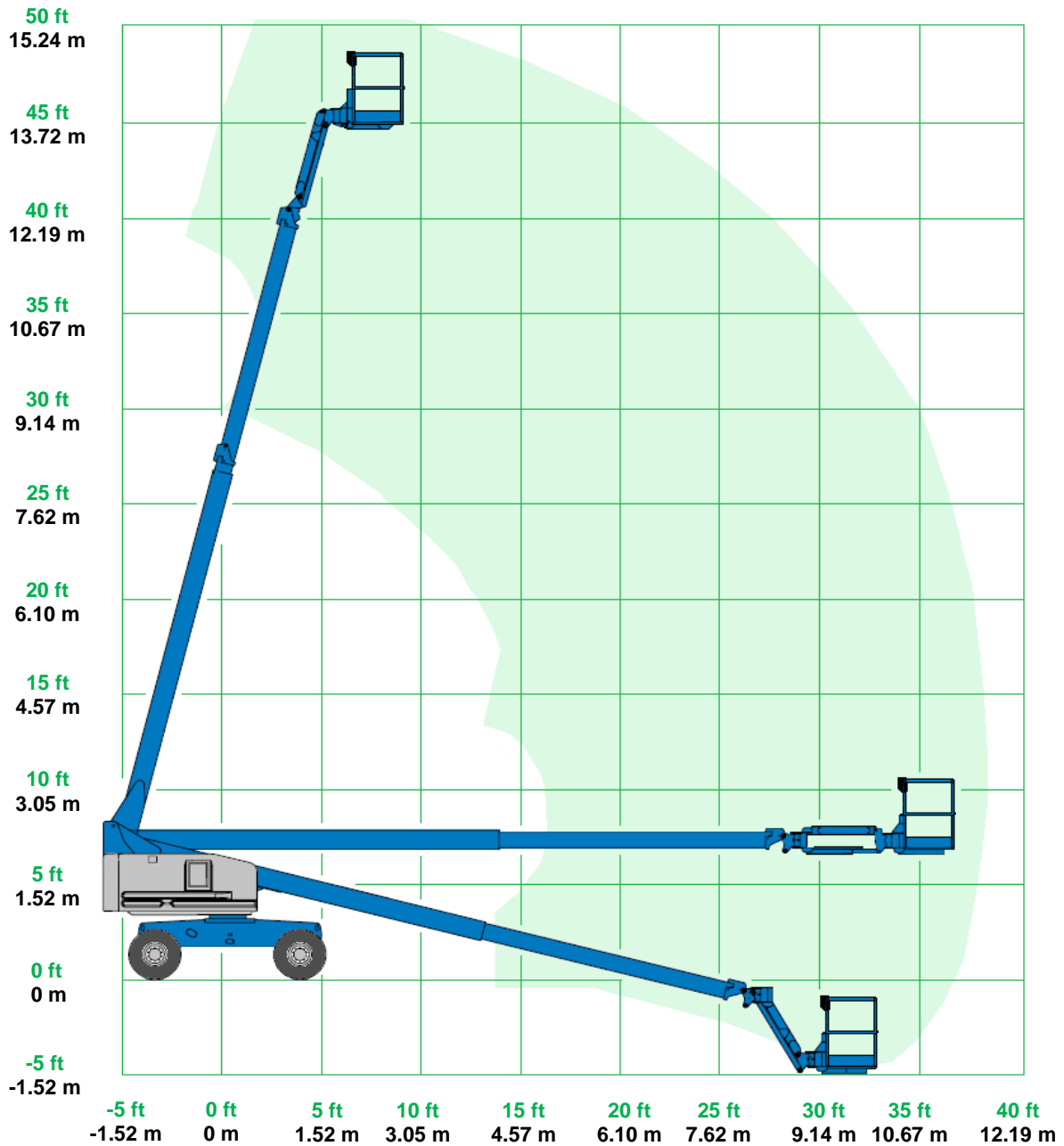
PRODUCTIVITY		
Platform capacity	227 kg	500 lb
Maximum number of persons	2	2
Maximum wind speed (12.5 m/s)	45km/h	28 mph
Platform rotation	160°	160°
Vertical jib rotation	135°	135°
Turntable rotation	360° continuous	360° continuous
Turntable tailswing	0.86 m	2 ft 10 in
Drive speed - stowed	5.6 km/h	3.47 mph
Drive speed - raised or extended	1.1 km/h	0.68 mph
Gradeability - stowed**	40%	21.80°
Inside turning radius	2.03 m	6 ft 8 in
Outside turning radius	4.78 m	15 ft 8 in
Controls	12 V DC proportional	12 V DC proportional
Tyres - RT lug - foam-filled NHS	12-16.5	12-16.5
Wheel load maximum***	3,855 kg	8,498 lb
Axle load maximum***	6,303 kg	13,895 lb
Localised pressure per tyre***	4.60 kg/cm <sup>2</sup> (448 kPa)	65 psi
Occupied pressure***	10.50 kPa	219 psf

POWER		
Power source	Deutz 3 cylinder diesel 35.8 kW (48 hp)	
Auxiliary power unit	12 V DC	12 V DC
Hydraulic tank capacity	170 L	44 gal lqd
Fuel tank capacity	91 L	24 gal lqd

WEIGHT****		
	7,181 kg	15,831 lb



## GENIE S-45 ..... RANGE OF MOTION



\*The metric equivalent of working height adds 2 m to platform height. Imperial adds 6 ft to platform height.

\*\*Gradeability applies to driving on slopes. See operator's manual for details regarding slope rating.

\*\*\*Floor loading information is approximate. It should be used only with adequate safety factors.

\*\*\*\*Weight will vary depending on options.