

GENIE Z-45/25J RT

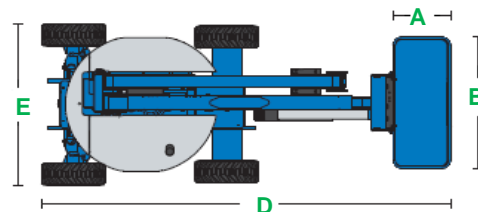
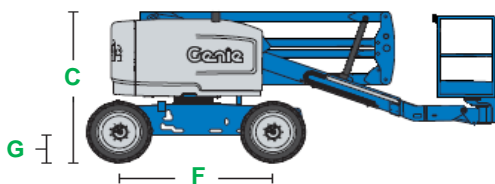


MEASUREMENTS		METRIC	IMPERIAL
Working height maximum*		16.07 m	52 ft 9 in
Platform height maximum		14.07 m	46 ft 2 in
Horizontal reach maximum		7.65 m	25 ft 1 in
Up and over clearance maximum		7.16 m	23 ft 6 in
A x B	Platform dimensions (length x width)	0.76 m x 1.83 m	2 ft 6 in x 6 ft
C	Height - stowed	2.11 m	6 ft 11 in
D	Length - stowed	6.83 m	22 ft 5 in
E	Width	2.29 m	7 ft 6 in
F	Wheelbase	2.03 m	6 ft 8 in
G	Ground clearance - centre	39 cm	1 ft 3 in
	Ground clearance - axle	26 cm	10 in

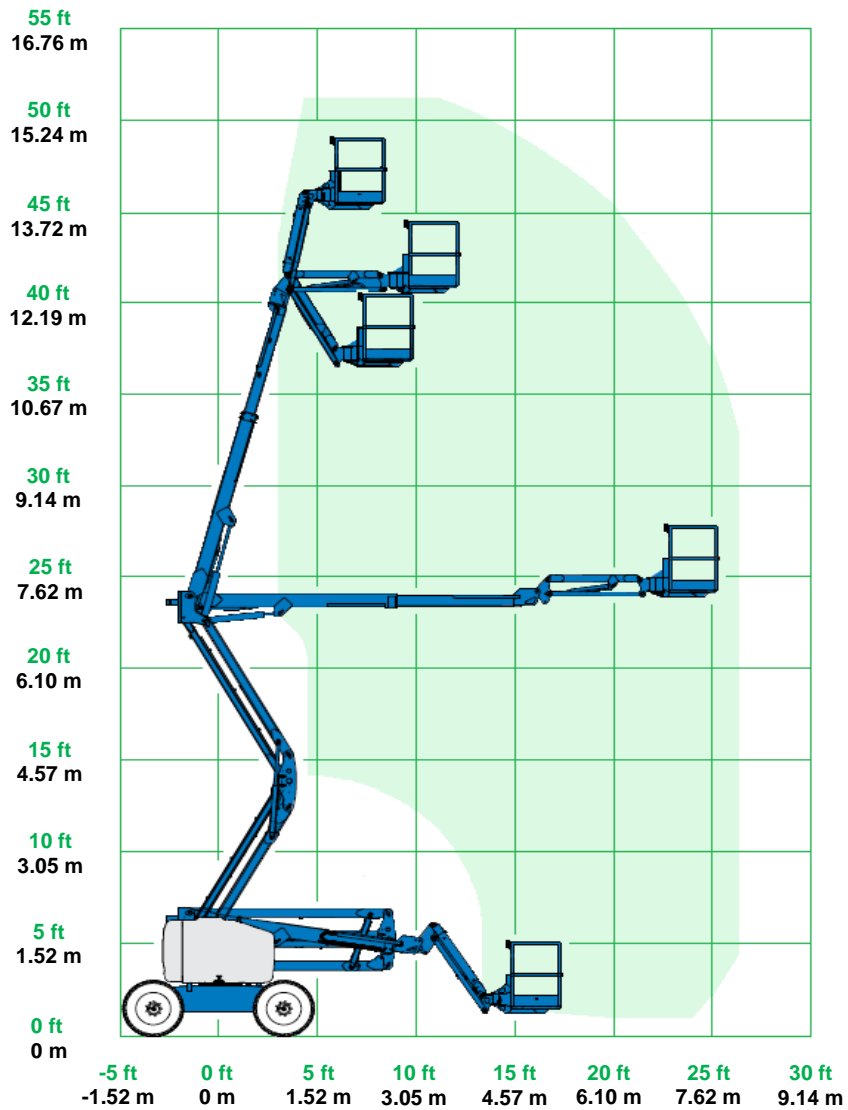
PRODUCTIVITY			
Platform capacity		227 kg	500 lb
Maximum number of persons		2	2
Maximum wind speed (12.5 m/s)		45 km/h	28 mph
Platform rotation		180°	180°
Turntable rotation		355° non-continuous	355° non-continuous
Turntable tailswing		zero	zero
Drive speed - stowed		4.5 km/h	2.79 mph
Drive speed - booms raised**		1.0 km/h	0.62 mph
Gradeability - stowed***		45%	24.23°
Inside turning radius		1.68 m	5 ft 6 in
Outside turning radius		4.50 m	14 ft 9 in
Controls		12V DC proportional	12V DC proportional
Tyres - foam-filled RT lug NHS		355/55D625	355/55D625
Wheel load maximum****		3,266 kg	7,200 lb
Localised pressure per tyre****		7.03 kg/cm ² (690 kPa)	100 psi
Occupied floor pressure****		1,128 kg/m ² (11.07 kPa)	270 psf

POWER			
Power source		3 cylinder diesel 35.8 kW (48 hp)	
Auxiliary power unit		12 V DC	12 V DC
Hydraulic tank capacity		83 L	22 gal lqd
Fuel tank capacity		64.4 L	17 gal lqd

WEIGHT*****			
		6,723 kgs	14,821 lb



GENIE Z45/25J RT RANGE OF MOTION



*The metric equivalent of working height adds 2 m to platform height. Imperial adds 6 ft to platform height.

**In lift mode (platform raised) the machine is designed to operate on firm, level surfaces only.

***Gradeability applies to driving on slopes. See operator's manual for details regarding slope rating.

****Floor loading information is approximate. It should be used only with adequate safety factors.

*****Weight will vary depending on options.