

# JLG M600JP

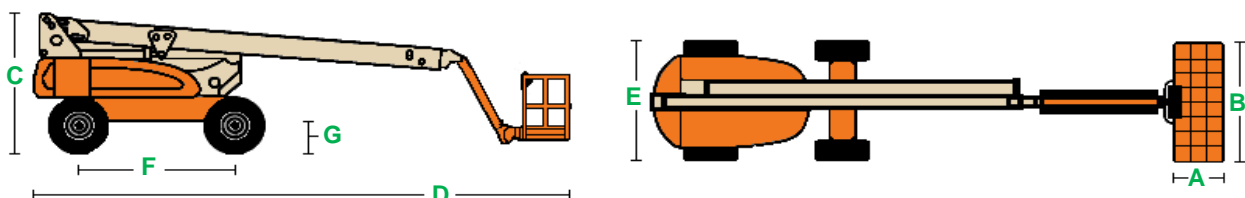


MEASUREMENTS		METRIC	IMPERIAL
Working height maximum*		20.29 m	66 ft 7 in
Platform height maximum		18.29 m	60 ft
Horizontal reach maximum		13.23 m	43 ft 5 in
<b>A x B</b>	Platform dimensions (length x width)	0.76 m x 1.83 m	2 ft 6 in x 6 ft
Overall jib length		1.24 m	4 ft 1 in
<b>C</b>	Height - stowed	2.57 m	8 ft 5 in
<b>D</b>	Length - stowed	10.15 m	33 ft 4 in
<b>E</b>	Width	2.44 m	8 ft
<b>F</b>	Wheelbase	2.74 m	8 ft 12 in
<b>G</b>	Ground clearance - centre	30 cm	12 in

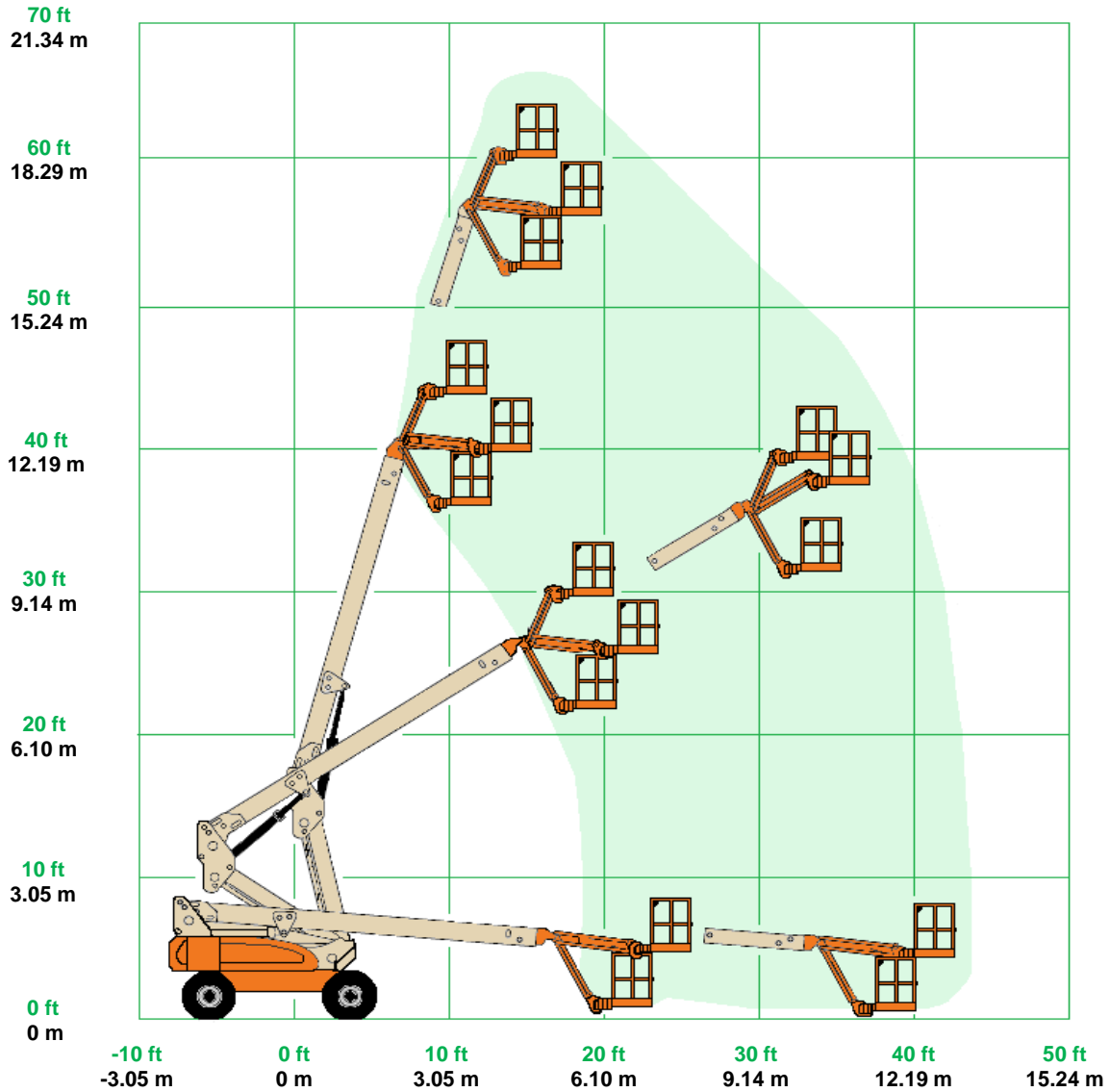
PRODUCTIVITY			
Platform capacity		230 kg	507 lb
Maximum number of persons		2	2
Maximum wind speed (12.5 m/s)		45km/h	28 mph
Platform rotation angle		180°	180°
Jib plus rotation angle		180°	180°
Jib raise angle		89°	89°
Jib lower angle		56°	56°
Jib articulation range		145°	145°
Slewing angle		400° non-continuous	400° non-continuous
Continuous slew		no	no
Tailswing		1.22 m	4 ft
Drive speed - stowed		5 km/h	3.10 mph
Drive speed - booms raised**		0.8 km/h	0.49 mph
Gradeability - stowed***		45%	24.23°
Inside turning radius		1.22 m	4 ft
Outside turning radius		4.64 m	15 ft 3 in
Controls		proportional	proportional
Tyres - RT lug, foam-filled, non-marking		36/14 LL-22.5	36/14 LL-22.5
Wheel load maximum****		3,500 kg	7,700 lb
Maximum ground bearing pressure****		3.7 kg/cm <sup>2</sup> (362 kPa)	52 psi

POWER			
Power source		electric DC 8 x 6V 415 Amp h	
Engine		Kubota OC 60 5 kW (6.8 hp)	
Auxiliary power		hand pump	hand pump
Hydraulic tank capacity		56.78 L	15 gal lqd
Diesel fuel tank capacity		49.21 L	13 gal lqd
Genset		Mechron 55A	Mechron 55A

WEIGHT*****			
		7,497 kg	16,528 lb



## JLG M600JP ..... RANGE OF MOTION



\*The metric equivalent of working height adds 2 m to platform height. Imperial adds 6 ft to platform height.

\*\*In lift mode (platform raised) the machine is designed to operate on firm, level surfaces only.

\*\*\*Gradeability applies to driving on slopes. See operator's manual for details regarding slope rating.

\*\*\*\*Floor loading information is approximate. It should be used only with adequate safety factors.

\*\*\*\*\*Weight will vary depending on options.