

# MANITOU 280TJ

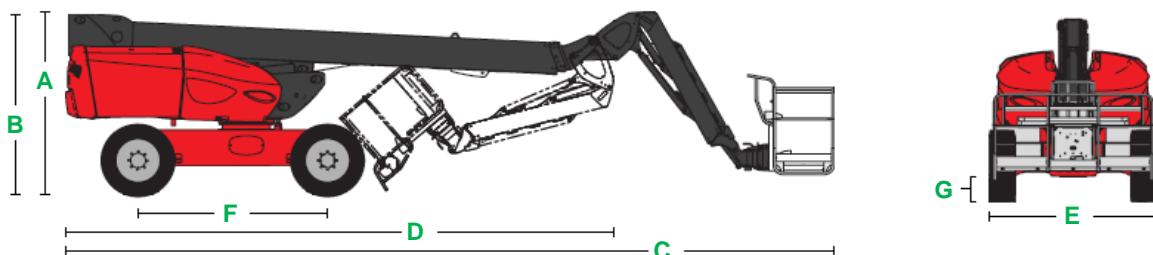


| MEASUREMENTS                         |                           | METRIC          | IMPERIAL         |
|--------------------------------------|---------------------------|-----------------|------------------|
| Working height maximum*              |                           | 27.75 m         | 91 ft            |
| Platform height maximum              |                           | 25.75 m         | 84 ft 6 in       |
| Outreach                             |                           | 21.45 m         | 70 ft 4 in       |
| Platform dimensions (length x width) |                           | 0.90 m x 2.30 m | 3 ft x 7 ft 7 in |
| A                                    | Height                    | 2.75 m          | 9 ft             |
| B                                    | Height - when folded      | 2.72 m          | 8 ft 11 in       |
| C                                    | Length                    | 11.35 m         | 37 ft 3 in       |
| D                                    | Length - when folded      | 8.10 m          | 26 ft 7 in       |
| E                                    | Width                     | 2.43 m          | 8 ft             |
| F                                    | Wheelbase                 | 2.80 m          | 9 ft 2 in        |
| G                                    | Ground clearance - centre | 43 cm           | 1 ft 5 in        |

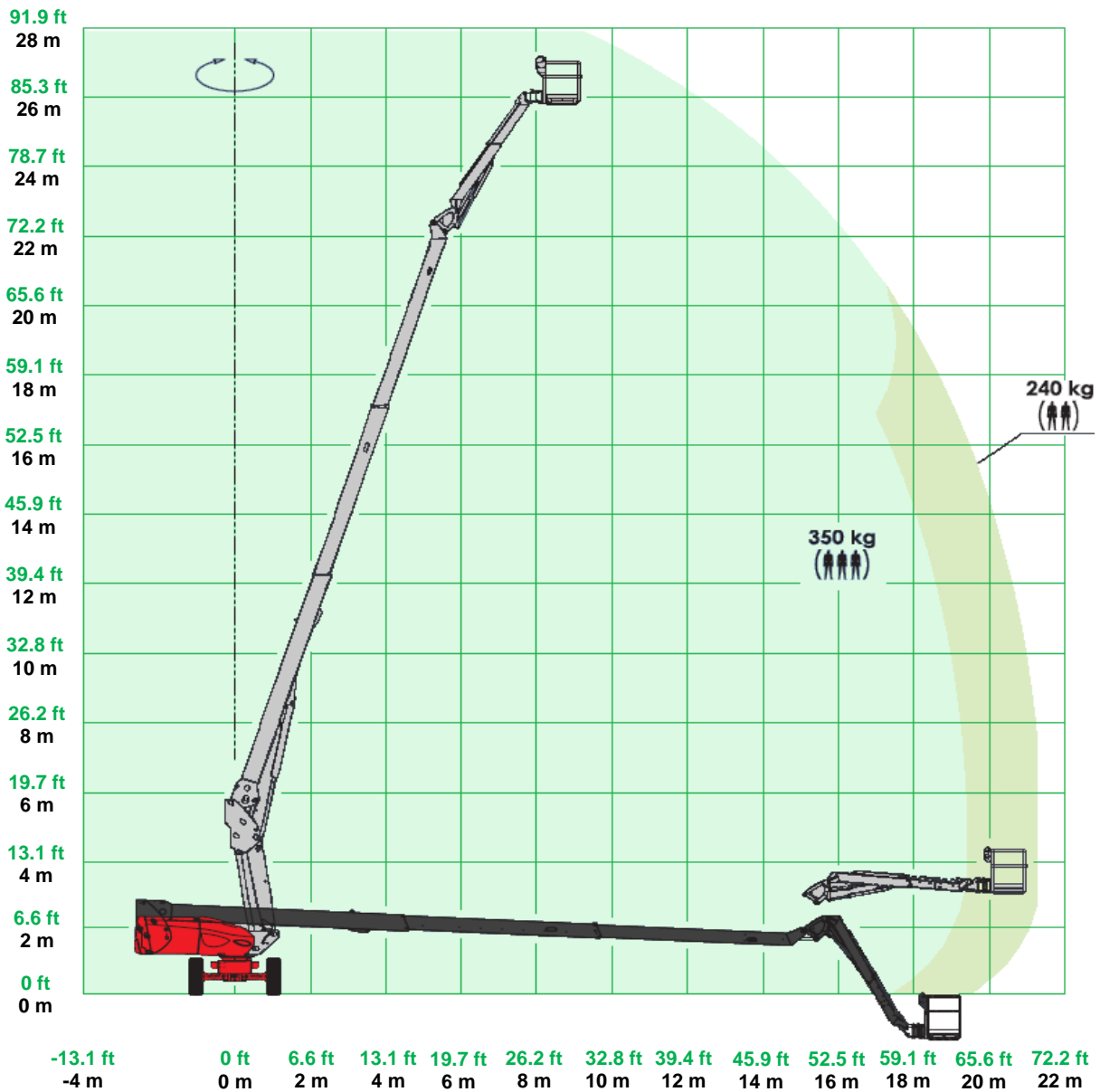
| PRODUCTIVITY  |                                  |                   |
|---|----------------------------------|-------------------|
| Platform capacity - 3 persons / 2 persons             | 350 kg / 240 kg                  | 771 lb / 529 lb   |
| Maximum number of persons                             | 3                                | 3                 |
| Maximum wind speed (12.5 m/s)                         | 45 km/h                          | 28 mph            |
| Platform rotation                                     | +90° / -90°                      | +90° / -90°       |
| Turret rotation                                       | continuous                       | continuous        |
| Jib tilting   | +70° / -70°                      | +70° / -70°       |
| Drive speed - stowed                                  | 4.70 km/h                        | 2.92 mph          |
| Drive speed - booms raised                            | 0.80 km/h                        | 0.49 mph          |
| Gradeability - stowed**                               | 40%                              | 21.80°            |
| Maximum tilt  | 7%                               | 4°                |
| Inside turning circle                                 | 2 m                              | 6 ft 7 in         |
| Outside turning circle                                | 4.33 m                           | 14 ft 2 in        |
| Basket turning radius                                 | 9.75 m                           | 32 ft             |
| Controls  | proportional                     | proportional      |
| Drive   | four wheel - crab                | four wheel - crab |
| Tyres - foam-filled RT lug                            | 385/45-28                        | 385/45-28         |
| Wheel load maximum***                                 | 10,500 kg                        | 23,148 lb         |
| Contact surface on the ground (hard / soft ground)*** | 623 / 1,160 cm <sup>2</sup>      | -                 |
| Surface penetration (hard / soft ground)***           | 13.15 / 7.06 daN/cm <sup>2</sup> | -                 |

| POWER              |  |            |
|--------------------|--|------------|
| Power source       | Kubota 4 cylinder diesel 34 kW (46 hp) |            |
| Fuel tank capacity | 72 L                                   | 19 gal lqd |

| WEIGHT**** |           |           |
|------------|-----------|-----------|
|            | 16,650 kg | 36,706 lb |



## MANITOU 280TJ ..... RANGE OF MOTION



\*The metric equivalent of working height adds 2 m to platform height. Imperial adds 6 ft to platform height.

\*\*Gradeability applies to driving on slopes. See operator's manual for details regarding slope rating.

\*\*\*Floor loading information is approximate. It should be used only with adequate safety factors.

\*\*\*\*Weight will vary depending on options.